

Middlefield Junction

May 2024 – Monthly Construction Update



Construction Progress

In April, the construction team, James E. Roberts-Obayashi Corporation (JERO), completed wood framing of all walls and roofs. Windows have been installed up to the 2nd floor in the northern building and the 4th floor in the southern building. This month, JERO will continue installing windows in both buildings, as well as ventilation, electrical, plumbing, and fire sprinkler systems.

Construction Schedule

JERO began work on-site in June 2023. Currently, the development is approximately 42% complete. Construction completion is still expected in April 2025. Upon completion, Middlefield Junction will be a two-building, six-story, affordable housing development with 179 apartments, 152 parking spaces, a childcare center, and a public community space.

Community Impacts

As construction continues, the impacts to the community remain in line with typical construction with moderate noise during work hours (7am-4pm on weekdays and occasionally 9am-6pm on weekends). Previously, construction was impacting street parking, but starting this month, we were able to allow more construction crew parking onsite and relieve some of the street parking. We are planning sewer system upgrades on Pacific Avenue will cause temporary closure of one lane. When the Pacific Avenue work is scheduled, notice will be provided to neighboring residents.

Apartment Leasing

Currently, leasing and waitlist applications are not available. Once the development nears construction completion, leasing and waitlist information will be released. If you are interested in living at Middlefield Junction, please visit www.middlefieldjunction.org and complete the contact form to receive the latest leasing information.

Project Team

General Contractor

[James E. Roberts-Obayashi Corporation](#)
Phone: 925-570-0562

Project Architect

[BAR Architects & Interiors](#)

Project Developer

[Mercy Housing California](#)

Project Website

www.middlefieldjunction.org

Middlefield Junction

May 2024 – Monthly Construction Update

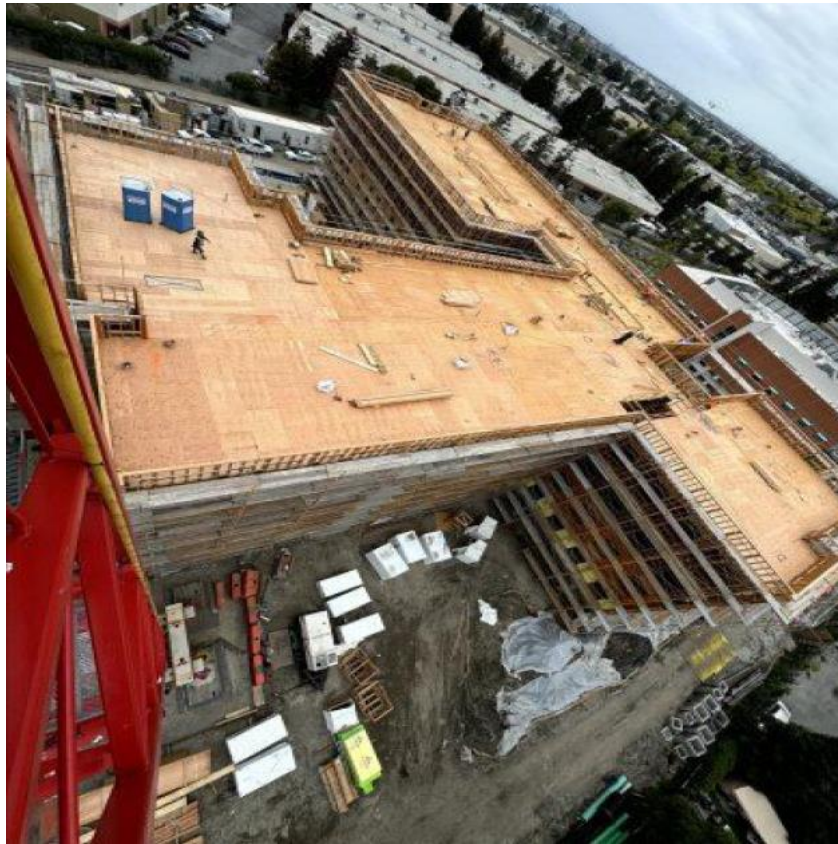


Figure 1 – Wood framing progress at the northern building, May 2024. This building is framed through the roof. Windows are installed through the 2nd story.

Figure 2 – Wood framing progress at the southern building, May 2024. This building is framed through the roof. Windows are installed through the 4th story.

